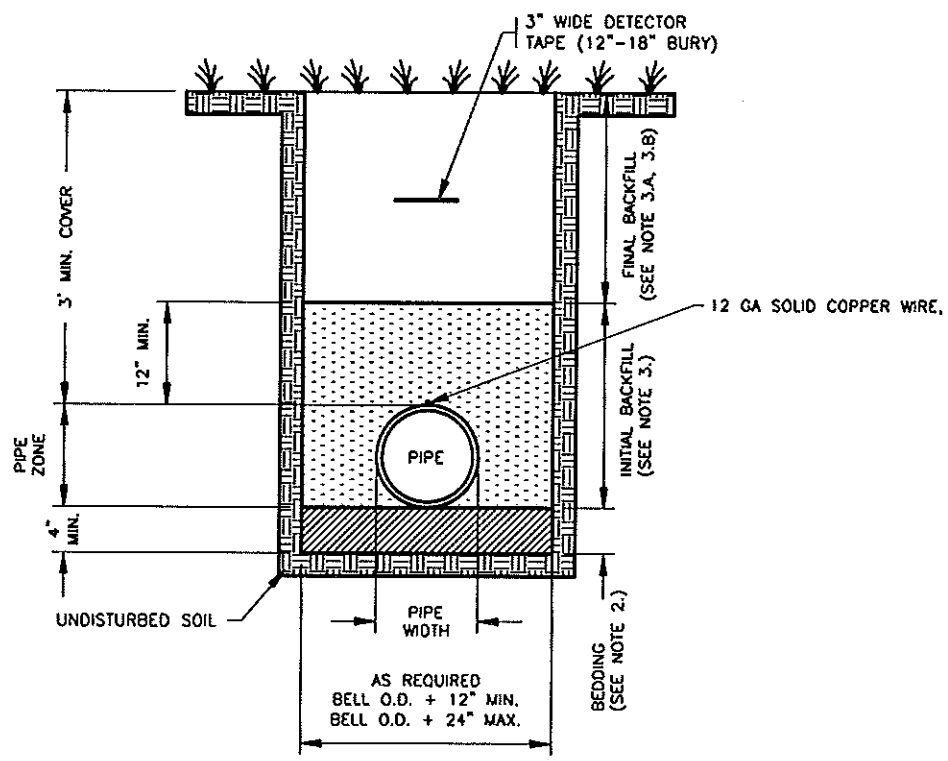


L:\ESD-1\1.1 General Consulting\Drawings\Standard Details\Water\Updated Details\W-01.dwg: Last Saved By: FRANK, 6/9/2017 3:08:31 PM, Layout1: plotted By: Frank, 06/09/17 03:37:23 PM

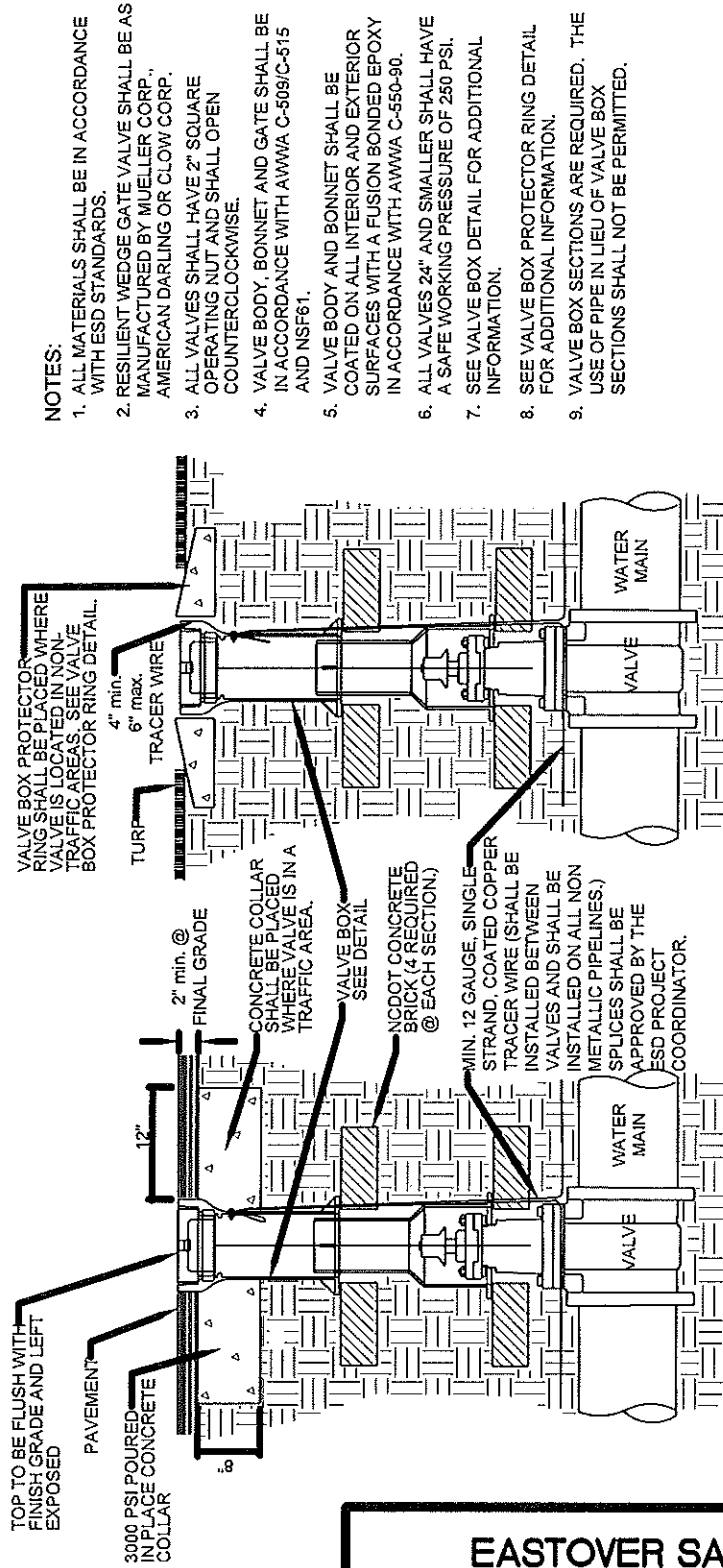


WATER MAIN TRENCH DETAILS
TYPE 3 LAYING CONDITIONS
 N.T.S.

NOTES:

1. LAYING CONDITIONS AS PER AWWA C600 AND C605 STANDARDS.
2. BEDDING MATERIAL SHALL BE 4" MINIMUM THICKNESS, LOOSE SOIL (DEFINED AS NATIVE SOIL EXCAVATED FROM THE TRENCH), FREE FROM ROCKS AND SHALL PROVIDE UNIFORM SUPPORT FOR THE FULL LENGTH OF PIPE. COMPACT TO 95% MAXIMUM DENSITY.
3. INITIAL BACKFILL SHALL BE LIGHTLY CONSOLIDATED IN MAXIMUM 6" LOOSE LIFTS, COMPACTED TO 95% OF MAXIMUM DENSITY.
 - A: UNDER AREAS TO BE SEEDED OR SODDED, COMPACT SUCCEEDING LAYERS OF FINAL BACKFILL IN 12" LOOSE LIFTS TO 85% MAXIMUM DENSITY.
 - B: UNDER STRUCTURES, PAVEMENTS AND ROAD SHOULDERS, COMPACT SUCCEEDING LAYERS OF FINAL BACKFILL IN 6" LOOSE LIFTS TO 95% MAXIMUM DENSITY EXCEPT COMPACT TOP 12" OF SUBGRADE TO 98% MAXIMUM DENSITY.
4. PROVIDE 12 GA SOLID COPPER WIRE IN SUFFICIENT TO BE INSTALLED AROUND EACH SEPARATE RUN OF ALL BURIED PVC PIPING. AT VALVE BOXES, BRING WIRE TO WITHIN 4" TO 6" OF TOP OF BOX AND INSERT INTO BOX THROUGH DRILLED HOLE.
5. INSTALL 3" WIDE DETECTOR TAPE AT 12"-18" DEPTH. TAPE SHALL HAVE MIDDLE FOIL LAYER.

| | |
|--|------------|
| EASTOVER SANITARY DISTRICT | |
| DRAWING # | W-1 |
| STANDARD WATER MAIN TRENCH DETAIL | |

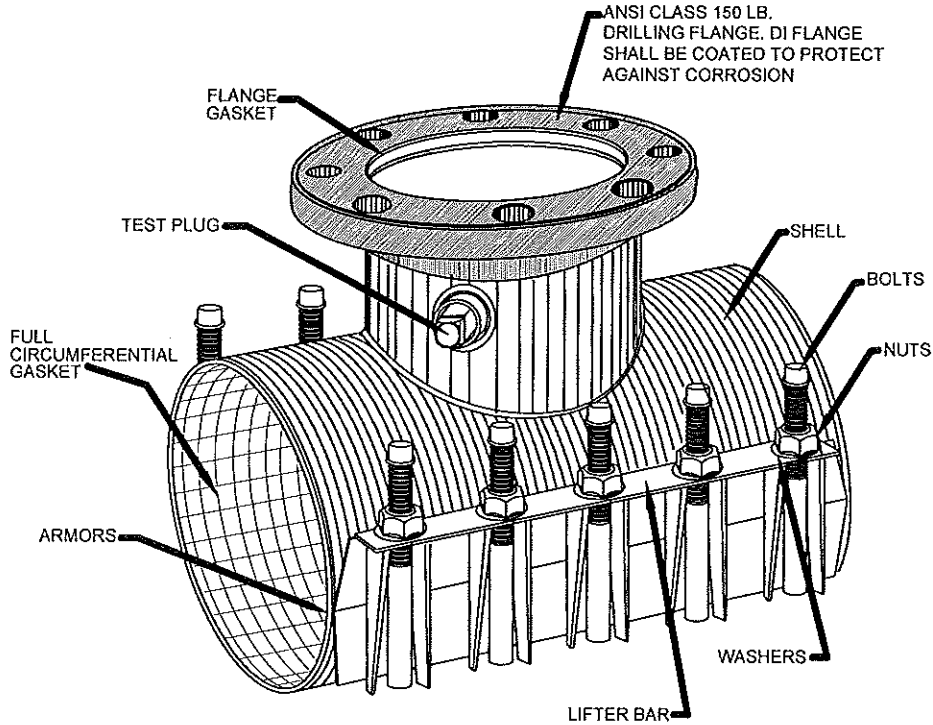


NOTES:

1. ALL MATERIALS SHALL BE IN ACCORDANCE WITH ESD STANDARDS.
2. RESILIENT WEDGE GATE VALVE SHALL BE AS MANUFACTURED BY MUELLER CORP., AMERICAN DARLING OR CLOW CORP.
3. ALL VALVES SHALL HAVE 2" SQUARE OPERATING NUT AND SHALL OPEN COUNTERCLOCKWISE.
4. VALVE BODY, BONNET AND GATE SHALL BE IN ACCORDANCE WITH AWWA C-509/C-515 AND NSF61.
5. VALVE BODY AND BONNET SHALL BE COATED ON ALL INTERIOR AND EXTERIOR SURFACES WITH A FUSION BONDED EPOXY IN ACCORDANCE WITH AWWA C-550-90.
6. ALL VALVES 24" AND SMALLER SHALL HAVE A SAFE WORKING PRESSURE OF 250 PSI.
7. SEE VALVE BOX DETAIL FOR ADDITIONAL INFORMATION.
8. SEE VALVE BOX PROTECTOR RING DETAIL FOR ADDITIONAL INFORMATION.
9. VALVE BOX SECTIONS ARE REQUIRED. THE USE OF PIPE IN LIEU OF VALVE BOX SECTIONS SHALL NOT BE PERMITTED.

| | |
|-----------------------------------|----------------------------|
| EASTOVER SANITARY DISTRICT | |
| DRAWING # | GATE VALVE ASSEMBLY |
| W-2 | |

| NOMINAL PIPE SIZE (INCH) | BRANCH SIZE | APPROX. WT. LBS. |
|--------------------------|--------------------------|---------------------------|
| 4" | 3", 4" | 28, 30 |
| 6" | 3", 4", 6" | 36, 38, 45 |
| 8" | 3", 4", 6", 8" | 42, 44, 48, 66 |
| 10" | 3", 4", 6", 8", 10" | 45, 48, 55, 70, 80 |
| 12" | 3", 4", 6", 8", 10", 12" | 50, 52, 60, 81, 96, 143 |
| 16" | 3", 4", 6", 8", 10", 12" | 78, 80, 85, 100, 115, 172 |
| 24" | 3", 4", 6", 8", 10", 12" | 85, 87, 90, 100, 145, 230 |



NOTES:

1. ALL MATERIALS SHALL BE IN ACCORDANCE WITH ESD STANDARDS.
2. TAPPING SLEEVES SHALL BE AS MANUFACTURED BY ROMAC, SMITH-BLAIR, OR APPROVED EQUAL.
3. STAINLESS STEEL TAPPING SLEEVE MAY BE UTILIZED FOR ALL TAPPING OF MAINS UP TO AND INCLUDING 24" DIAMETER WITH 12" OR LESS BRANCH. BRANCH GREATER THAN 12" SHALL REQUIRE FULL BODY D.I. M.J. TAPPING SLEEVE (SEE DETAIL W.10).
4. SHELL AND LUGS SHALL BE STAINLESS STEEL PER ASTM A 240, TYPE 304 AND 304L.
5. BOLTS SHALL BE 5/8" UNC ROLLED THREAD, STAINLESS STEEL PER ASTM A 193 TYPE 304 4" NOM. PIPE SIZE SHALL HAVE MIN. 1/2" BOLTS.
6. NUTS SHALL BE HEAVY HEX STAINLESS STEEL PER ASTM A-194, TYPE 304.
7. WASHERS SHALL BE STEEL AND PLASTIC LUBRICATING WASHER.
8. GASKETS SHALL BE VIRGIN SBR PER ASTM D 2000 MAA 610, COMPOUNDED FOR WATER AND SEWER SERVICE.
9. FLANGE SHALL BE DUCTILE IRON PER ASTM 536, GRADE 65-45-12, OR STAINLESS STEEL PER ASTM A-240, TYPE 304.
10. DIMENSIONS SHOWN ARE FOR REFERENCE AND MAY VARY BASED UPON MANUFACTURER. SLEEVES SHALL BE SIMILAR IN NATURE TO THAT SHOWN AND SHALL NOT DEVIATE IN ESSENTIAL DETAILS.
11. PIPE SURFACES SHALL BE CLEANED THOROUGHLY TO PERMIT A GOOD SEAL PRIOR TO INSTALLATION.
12. ALL TAPPING SLEEVES SHALL BE HYDROSTATICALLY PRESSURE TESTED IN ACCORDANCE WITH ESD SPECIFICATIONS. TEST SHALL BE WITNESSED AND APPROVED BY ESD PROJECT COORDINATOR PRIOR TO BEGINNING TAPPING PROCESS.
- 13.
14. THE NUMBER OF BOLTS, NUTS AND WASHERS SHOWN ARE FOR ILLUSTRATION ONLY, ACTUAL QUANTITY SHALL BE AS RECOMMENDED BY THE SLEEVE MANUFACTURER FOR THE REQUIRED SERVICE.

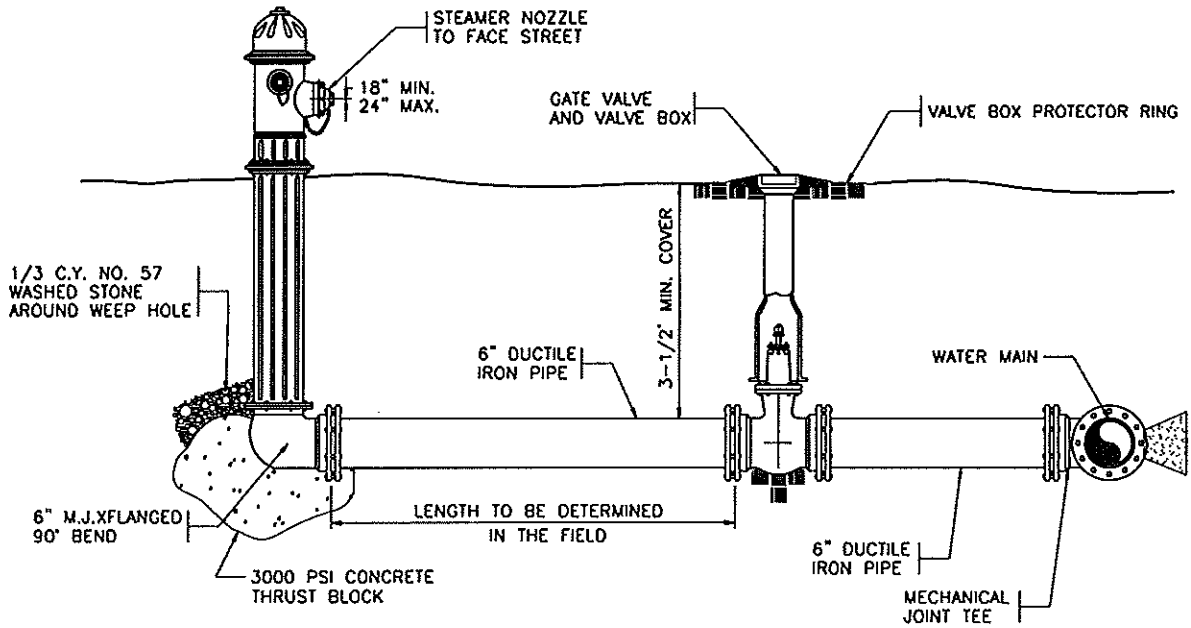
EASTOVER SANITARY DISTRICT

DRAWING #

W-3

**TAPPING SLEEVE
AND VALVE ASSEMBLY**

L:\sdd-12.01 general consulting\Drawings\standard details\water\updated details\W-04.dwg; Last Saved By: FRANK, 6/2/2017 3:02:12 PM; Layout: Plotted By: Frank, 06/09/17 03:41:14 PM



FIRE HYDRANT AND VALVE DETAIL

N.T.S.

NOTES:

1. ALL PIPE JOINTS SHALL BE RESTRAINED JOINT.
2. PLACE HYDRANTS AS DIRECTED BY EASTOVER SANITARY DISTRICT.
3. FIRE HYDRANTS SHALL BE AMERICAN DARLING MARK 73-5.
4. FIRE HYDRANT CONNECTIONS TO EXISTING WATER MAINS SHALL BE MADE USING A MECHANICAL JOINT TAPPING SLEEVE AND VALVE (SEE DETAIL W-23) BY WET TAP CONNECTION. THE TAPPING SLEEVE AND VALVE SHALL BE HYDROSTATICALLY TESTED PRIOR TO THE COMPLETION OF THE TAP IN THE PRESENCE OF THE OWNER.
5. MECHANICAL JOINT HYDRANT TEES ARE PERMITTED IN THE APPROPRIATE APPLICATION AND SUBJECT TO APPROVAL BY THE OWNER.
6. SEE VALVE BOX PROTECTOR RING FOR ADDITIONAL DETAILS

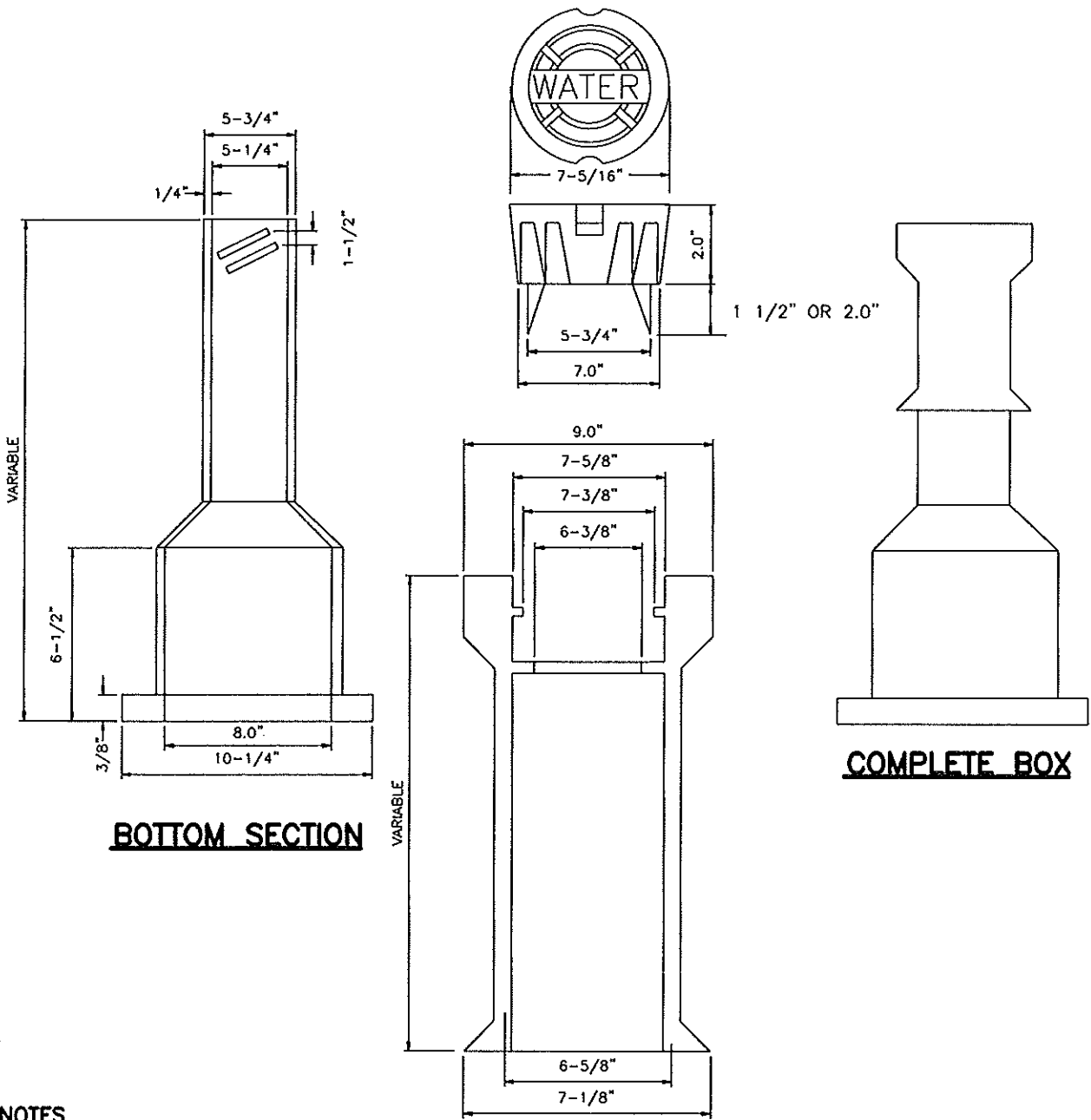
EASTOVER SANITARY DISTRICT

DRAWING #

W-4

**STANDARD FIRE HYDRANT
INSTALLATION DETAIL**

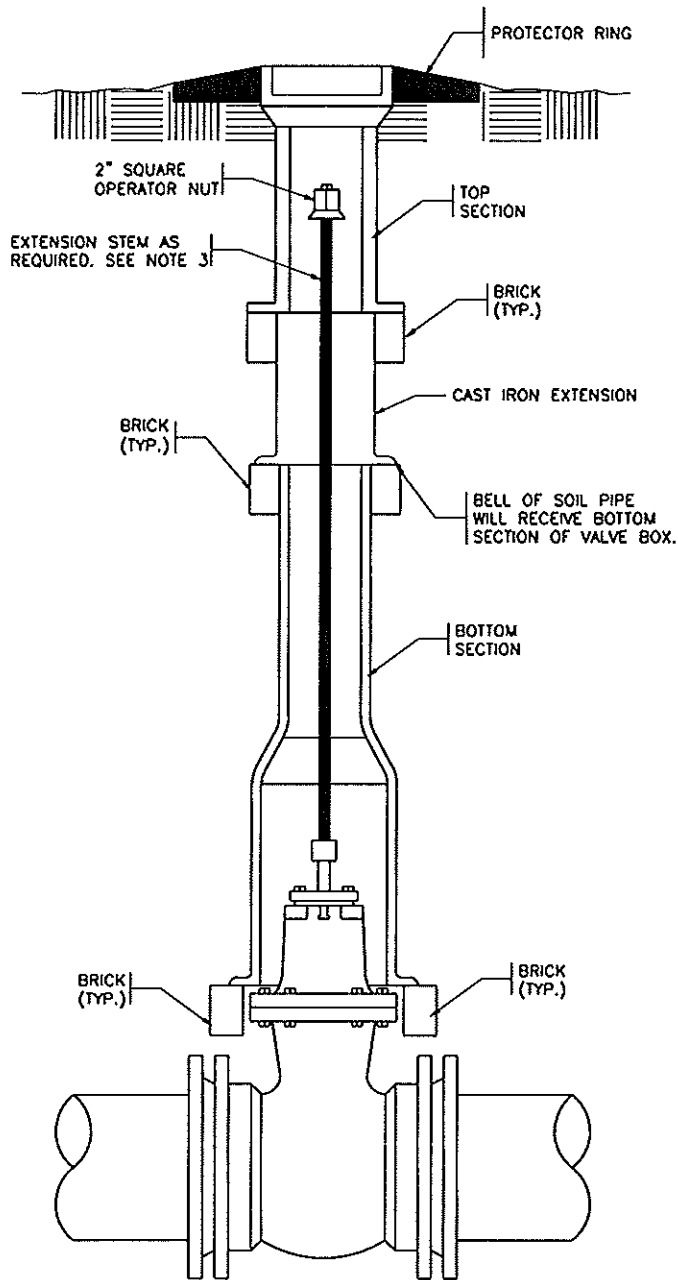
L:\msd-12.01 general consulting\Drawings\standard details\water\updated details\w-05.dwg; Last Saved By: ANDY PATTERSON, 9/10/2014 9:14:23 AM; Layout: 06/09/17 03:36:14 PM
 XREF: C:\MSOFT\PLT\ACADISO0511.PLT; W-05.dwg; IACG; No images



NOTES

1. VALVE BOX SHALL HAVE RAISED LETTERS "WATER" CAST INTO COVER.
2. VALVE BOX ACCOMMODATES 4" THRU 12" VALVES.
3. VALVE BOX SHALL HAVE 3/8" HOLE DRILLED IN TOP SECTION THRU WHICH A 1/2" X 1 1/2" GALVANIZED BOLT SHALL BE USED TO SECURE A 12GA. THHN TRACER WIRE FOR NON-FERROUS PIPE. A 1/2" WASHER SHALL BE USED BETWEEN NUT AND INSIDE OF BOX. TIGHTEN HAND TIGHT.
4. SCREW TYPE VALVE BOXES ARE NOT ALLOWED.
5. DIMENSIONS SHOWN ARE FOR INFORMATION ONLY AND VARY BASED UPON THE MANUFACTURER.
6. VALVE BOX SECTIONS ARE REQUIRED. THE USE OF PIPE BOX SECTIONS SHALL NOT BE PERMITTED.

| | |
|-----------------------------------|----------------------------|
| EASTOVER SANITARY DISTRICT | |
| DRAWING # | |
| W-5 | SLIP-TYPE VALVE BOX |



NOTE:

1. BOTTOM SECTION TO BE CENTERED OVER NUT, NOT TO BEAR ON THE VALVE BODY.
2. PROVIDE CLEARANCE BETWEEN VALVE BOX/BRICK AND THE VALVE.
3. WHEN OPERATING NUT DEPTH EXCEEDS 5'-0" BELOW FINISHED GRADE, PROVIDE EXTENSION STEM WITH STANDARD 2" SQ. OPERATING NUT IN TOP SECTION OF VALVE BOX. EXTENSION STEM SHALL BE SAME MANUFACTURE AS VALVE.

EASTOVER SANITARY DISTRICT

DRAWING #

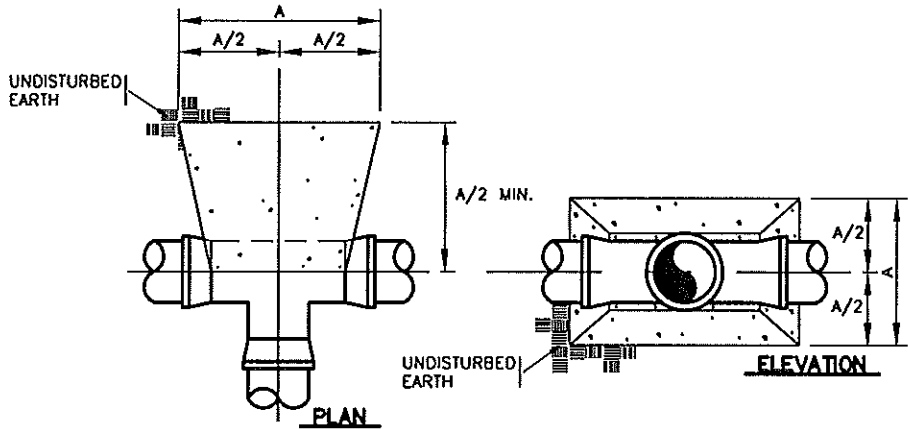
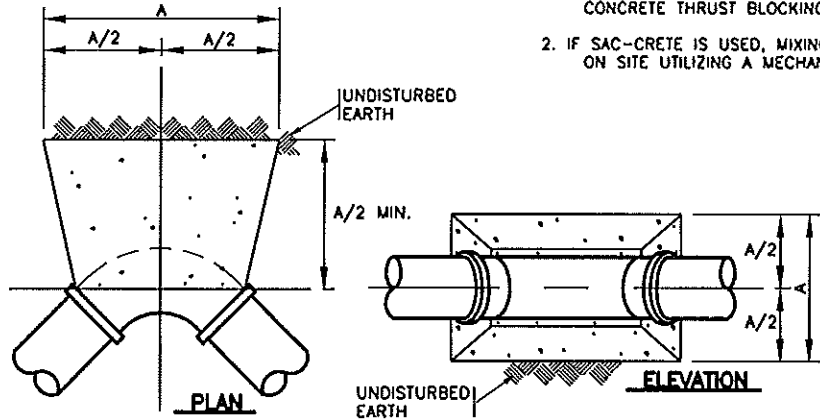
W-5A

**SLIP-TYPE VALVE BOX
(GREATER THAN 5'-0" TO OPERATOR)**

L:\work-12.01\pwworkspace\om\projects\unimod\details\water\unimod\details\W-06.dwg; Unit: Feet; Date Plotted: 06/09/17 03:32:31 PM
 PLOT: C:\Users\1111111111\Documents\1111111111.dwg; MADE: No Images

NOTES:

1. COMPACT FITTINGS ARE NOT ACCEPTABLE, STANDARD FITTINGS SHALL BE USED WITH CONCRETE THRUST BLOCKING.
2. IF SAC-CRETE IS USED, MIXING MUST BE ON SITE UTILIZING A MECHANICAL MIXER.



NOTES:

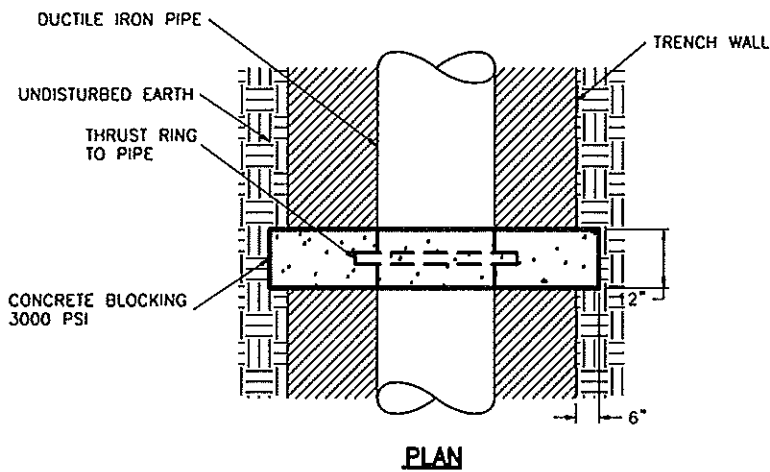
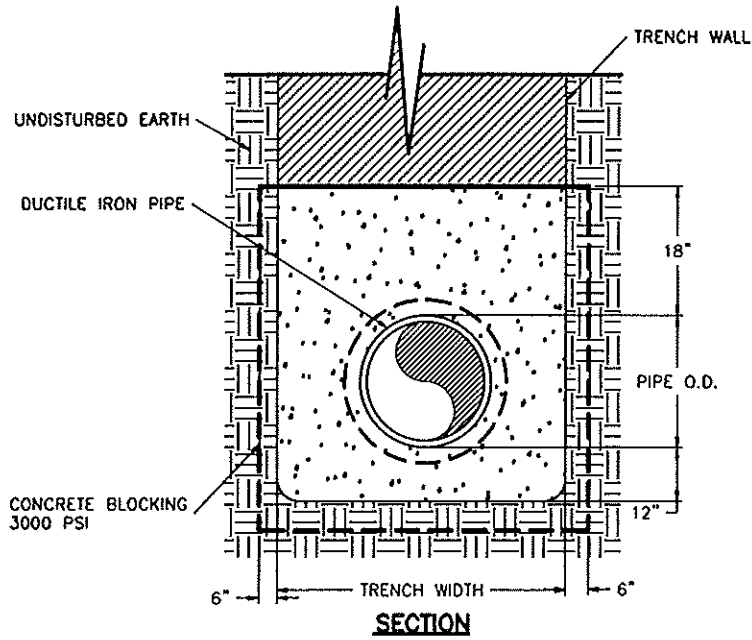
1. THRUST BLOCKS SHALL BE CONSTRUCTED OF 3000 P.S.I. CONCRETE
2. INSTALL TAR PAPER AROUND BEND OR FITTING TO PREVENT BONDING OF CONCRETE.
3. PRESSURE TEST AT 200 P.S.I.

| BEND / FITTING | DIMENSION A (FEET) | | | | | | | | |
|---------------------|---------------------------------|-----|-----|-----|-----|-----|-----|-----|-----|
| | PIPE SIZE (NOM. DIA. IN INCHES) | | | | | | | | |
| | 4 | 6 | 8 | 10 | 12 | 16 | 18 | 20 | 24 |
| 90° BEND | 1.4 | 2.0 | 2.7 | 3.4 | 4.0 | 5.4 | 6.0 | 6.7 | 8.0 |
| 45° BEND | 1.0 | 1.5 | 2.0 | 2.5 | 3.0 | 4.0 | 4.5 | 5.0 | 5.9 |
| 22 1/2° BEND | 0.8 | 1.1 | 1.5 | 1.8 | 2.2 | 2.9 | 3.2 | 3.6 | 4.3 |
| 11 1/4° BEND | 0.5 | 0.8 | 1.0 | 1.3 | 1.5 | 2.0 | 2.3 | 2.5 | 3.0 |
| TEE BRANCH/DEAD END | 1.2 | 1.7 | 2.3 | 2.9 | 3.4 | 4.5 | 5.1 | 5.7 | 6.8 |

**CONCRETE THRUST BLOCK DETAIL FOR
 PRESSURE MAIN HORIZONTAL BENDS AND TEES**
 N.T.S.

| | |
|-----------------------------------|-------------------------------------|
| EASTOVER SANITARY DISTRICT | |
| DRAWING # | CONCRETE THRUST BLOCKING |
| W-6 | |

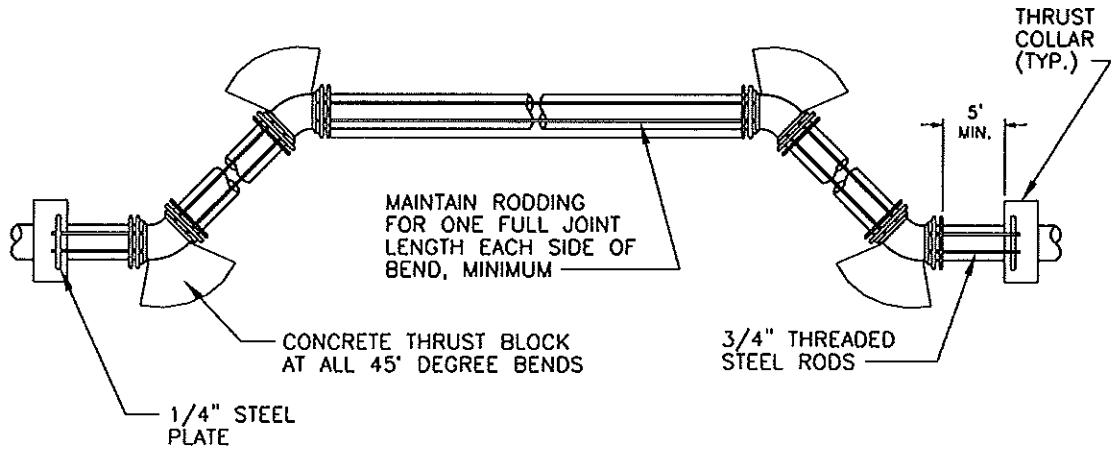
L:\etel-12.0\general consulting\Drawings\1000000 details\Water\updates details\Water\updates details\W-07.dwg; Last Saved By: ANDY PATTERSON, 12/31/2013 3:28:09 PM; Layout: Plotted By: Frank, 06/09/17 03:24:22 PM
 XREF: E50851P.dwg; E50851P.dwg; IMA02; No Images



THRUST COLLAR DETAIL
 N.T.S.

| | |
|-----------------------------------|---------------------------------|
| EASTOVER SANITARY DISTRICT | |
| DRAWING # | THRUST COLLAR DETAIL |
| W-7 | |

L:\mid-12.01_general consulting\Drawings\1000000 details\Water\updates details\w-08.dwg; Last Saved By: JADY PATTERSON, 12/31/2013 3:20:34 PM; Layout: 1; Plotted By: Frank, 05/05/17 02:55:28 PM
 XREF: C:\CS0511P\... \CS0511P.DWG; SOURCE: No images



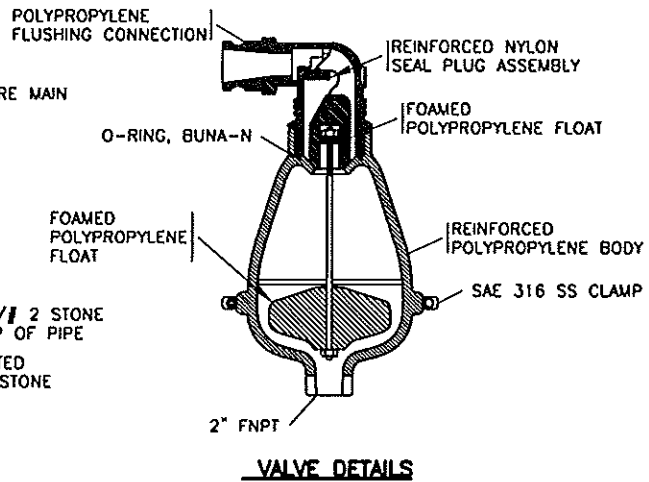
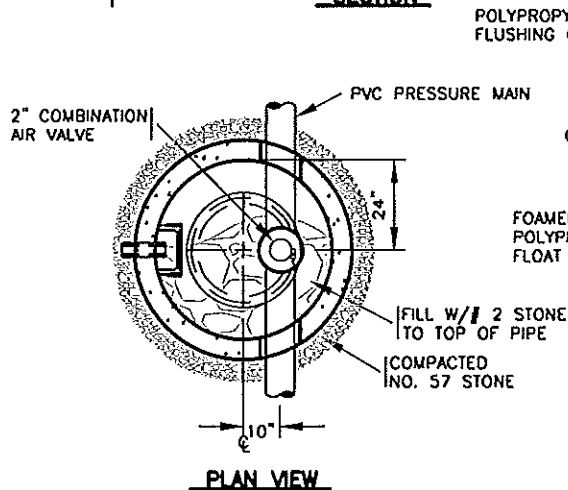
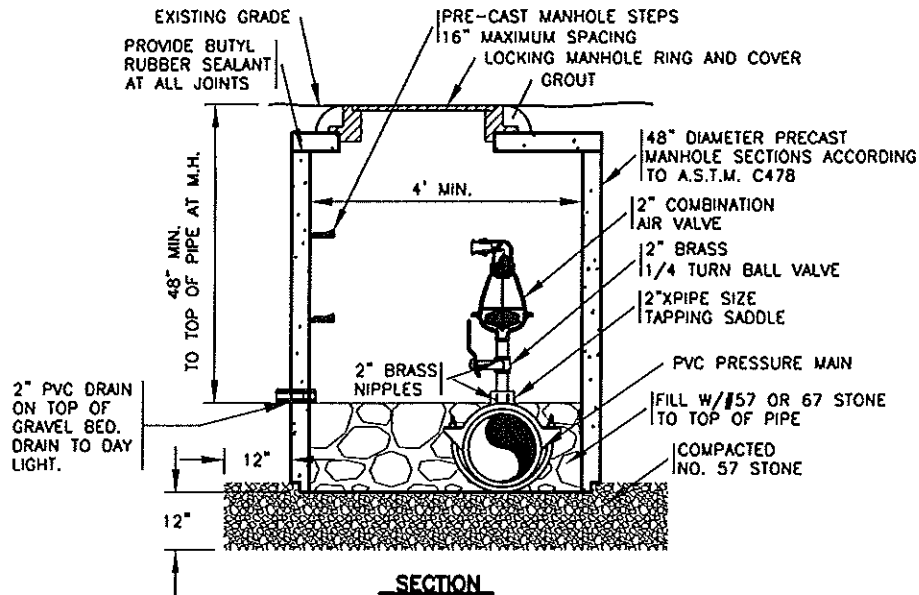
| STATIC THRUST SIZE OF 45° BEND | NUMBER OF IN POUNDS | NUMBER OF RODS REQUIRED |
|--------------------------------|---------------------|-------------------------|
| 6" | 4,328 | 2 |
| 8" | 7,694 | 2 |
| 12" | 17,312 | 2 |
| 16" | 30,779 | 4 |
| 20" | 48,091 | 6 |
| 24" | 69,252 | 8 |

NOTES:

- ONCE INSTALLED AND TIGHT, THE STEEL RODS AND BOLTS SHALL RECEIVE 2 COATS OF BITUMINOUS MATERIAL OR SHALL BE GALVANIZED.
- CONCRETE SHALL NOT CONTACT BOLTS OR ENDS OF MECHANICAL JOINT BENDS.

| | |
|-----------------------------------|-----------------------|
| EASTOVER SANITARY DISTRICT | |
| DRAWING # | VERTICAL BENDS |
| W-8 | |

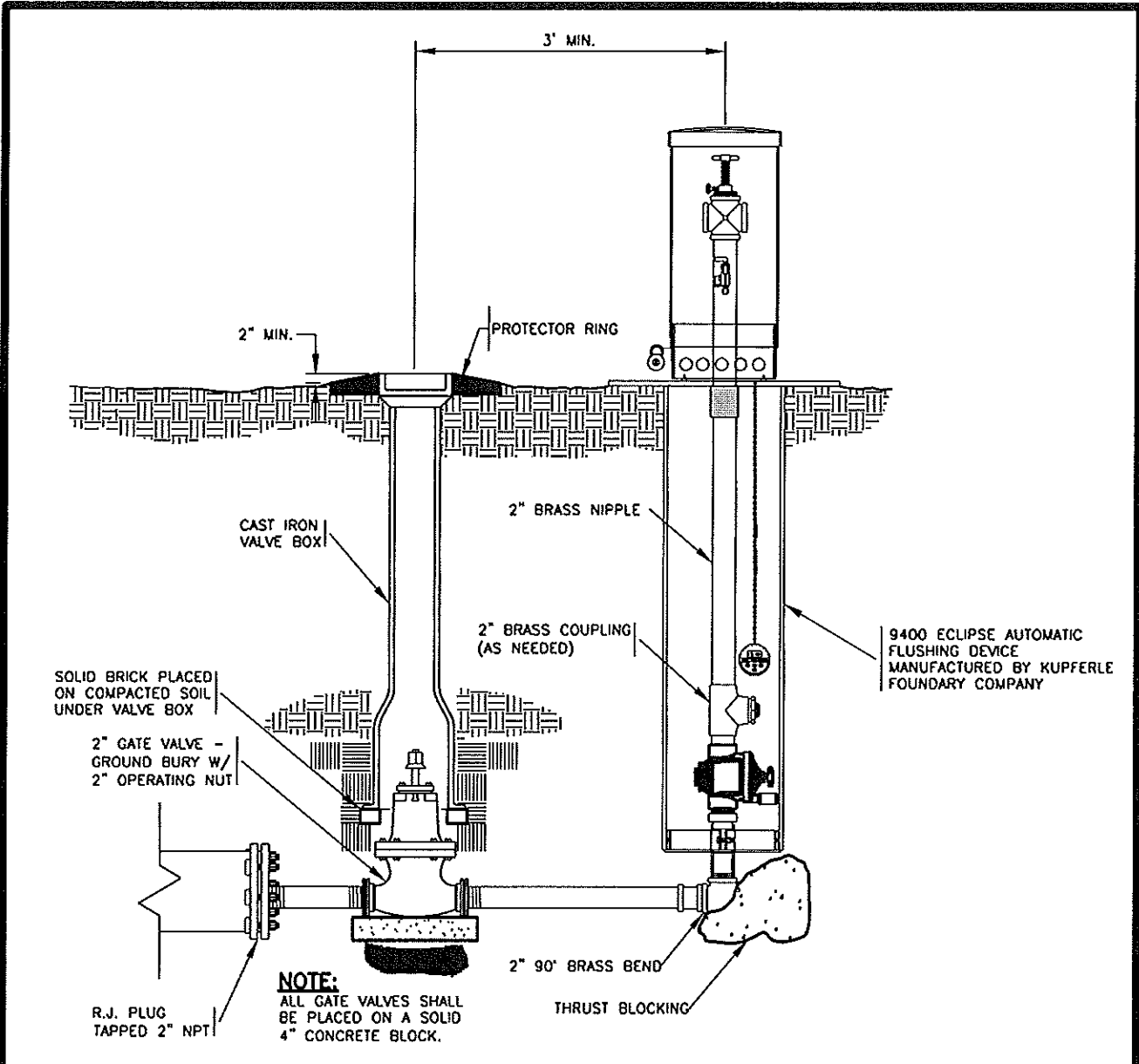
L:\mp-12.01 general consulting\Drawings\standard details\water\updated details\water\updated details\W-9.dwg: Lot Saved By: ANDY PATTERSON, 12/31/2013 3:31:14 PM, Layout1; Plotted By: Frank, 06/09/17 03:56:32 PM
 XREF: CS0511P..._ES0511P.DWG; IMAGE: No Images



COMBINATION AIR RELIEF/ VACUUM RELIEF VALVE ASSEMBLY DETAILS
N.T.S.

| | |
|-----------------------------------|---|
| EASTOVER SANITARY DISTRICT | |
| DRAWING # | COMBINATION AIR/ VACUUM RELIEF VALVE ASSEMBLY DETAIL |
| W-9 | |

L:\vend-12.01 general consulting\Drawings\standard details\water\updated details\W-10.dwg: Last Saved By: Frank, 0/9/2017 11:33:39 AM; Layout1; Plotted By: Frank, 06/09/17 03:59:53 PM



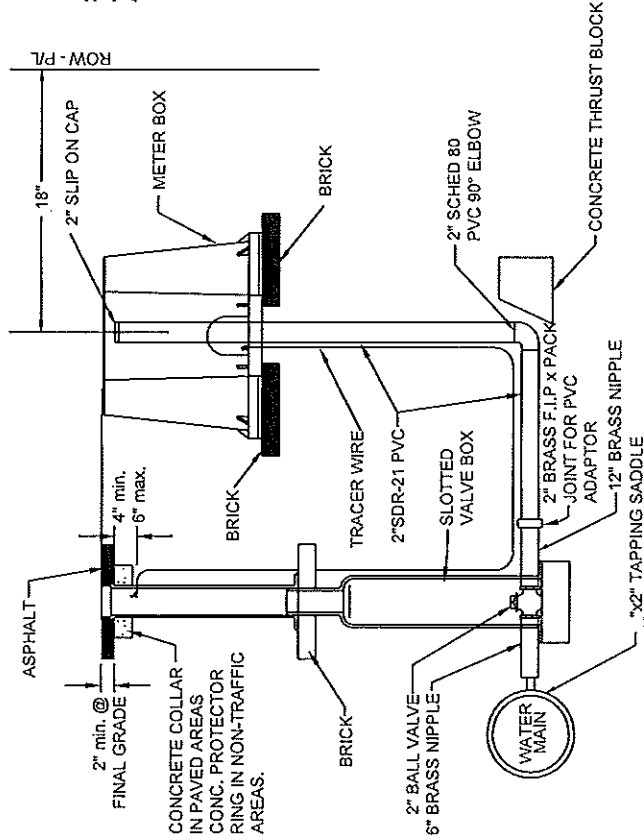
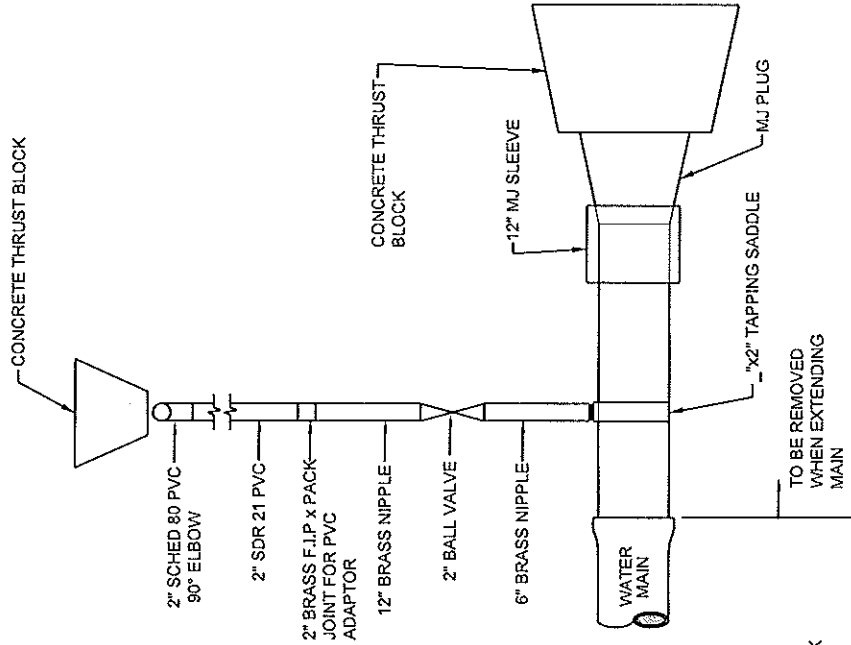
BLOWOFF ASSEMBLY AT END OF WATER MAIN
N.T.S.

NOTE: PROGRAMMABLE BLOWOFF ASSEMBLIES WILL BE INSTALLED AS DIRECTED BY THE DISTRICT MANAGER

| | |
|-----------------------------------|--|
| EASTOVER SANITARY DISTRICT | |
| DRAWING # | PROGRAMMABLE BLOWOFF ASSEMBLY |
| W-10 | |

NOTES:

1. ALL MATERIALS SHALL BE APPROVED BY ESD.
2. WHEN INSTALLED IN A PAVED AREA METER BOX SHALL BE SET 1/4" ABOVE FINISHED PAVEMENT GRADE AND PAVEMENT FEATHERED TO TOP OF BOX. COMPOSITE METER BOX SHALL BE USED IN PAVED AREAS.
3. METER BOX AND VALVE BOX SHALL BE IN ACCORDANCE WITH ESD DETAILS.
4. REMOVE ENTIRE ASSEMBLY FROM BELL OF WATER MAIN PIPE WHEN EXTENDING THE MAIN.
5. CENTER 2" SDR-21 PIPE IN METER BOX.



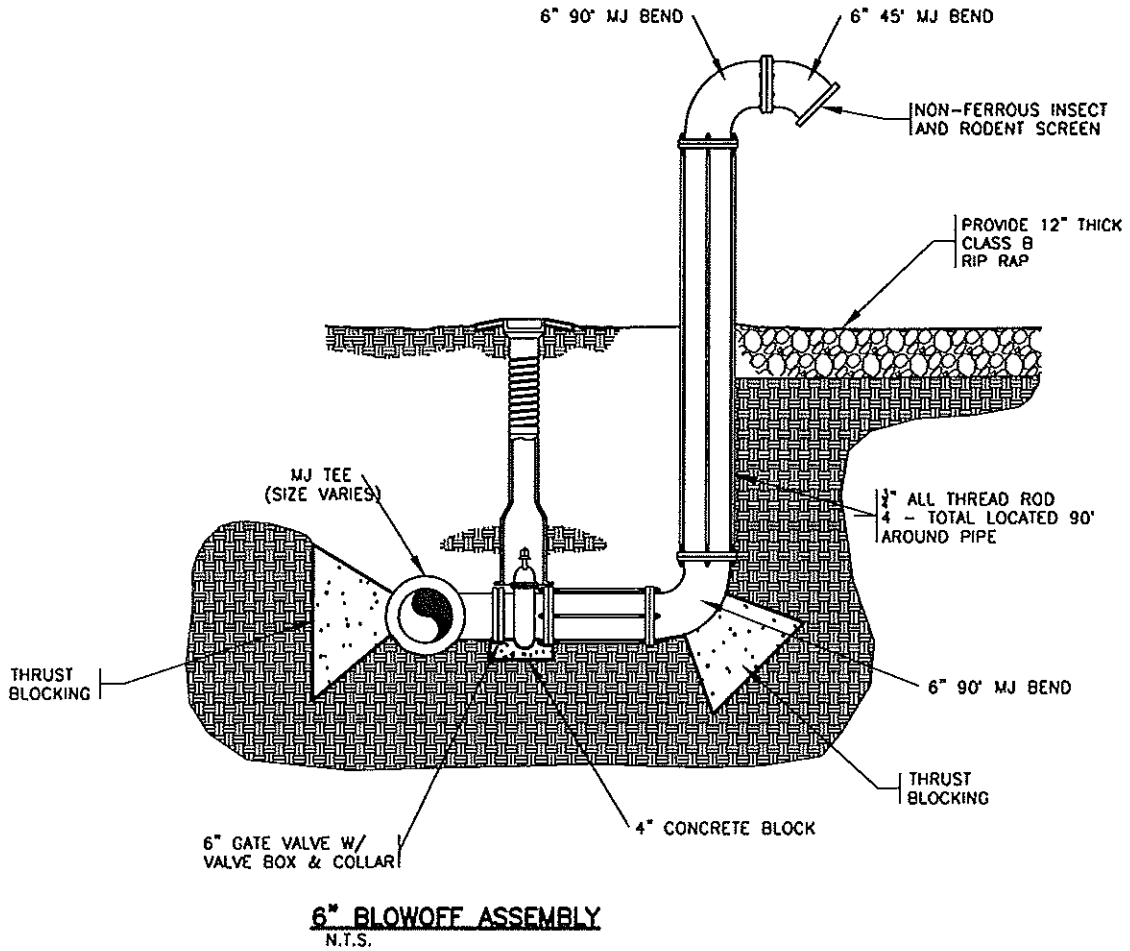
EASTOVER SANITARY DISTRICT

DRAWING #

W-11

2' BLOWOFF ASSEMBLY

L:\sds-1\c3\general consulting\Drawings\sanitary details\water\updated details\water\updated details\W-12.dwg; Last Saved By: ANDY PATTERSON, 12/31/2013 3:52:10 PM; Layout1; Plotted By: Frank, 06/06/17 04:01:34 PM
 XREF: ESDS31P.mxd\ESD331P.dwg; IMAGE: No images



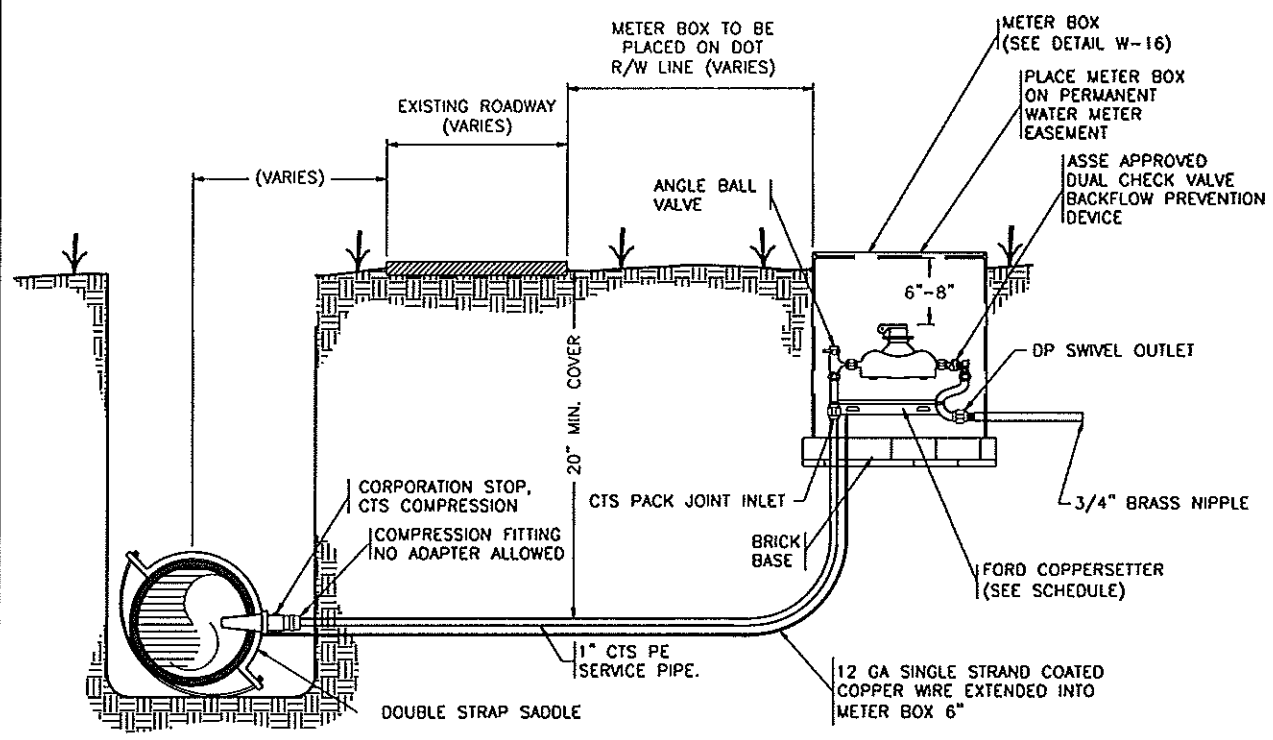
EASTOVER SANITARY DISTRICT

DRAWING #

W-12

6" BLOWOFF ASSEMBLY

| FORD CATALOG NO'S. | |
|------------------------|--------------------|
| 1" X 3/4" COPPERSETTER | VBH-72-82W-41-43NL |
| 1" CORPORATION STOP | F1000-4HL |
| SADDLE | STYLE 202S ROMAC |



3/4" OR 1" TYPICAL RESIDENTIAL SERVICE CONNECTION
N.T.S.

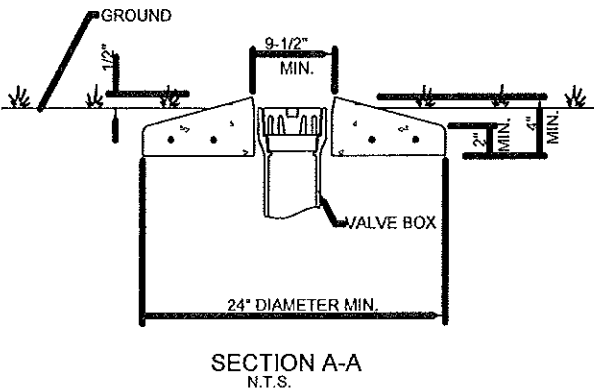
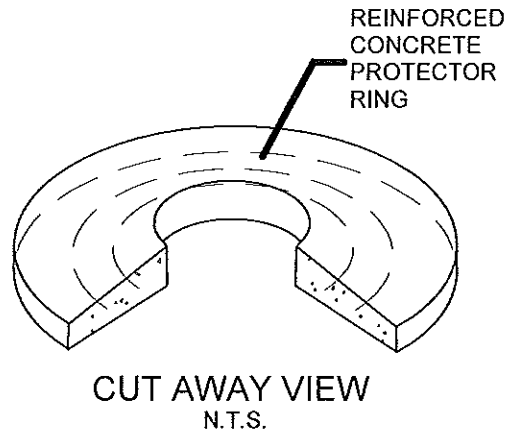
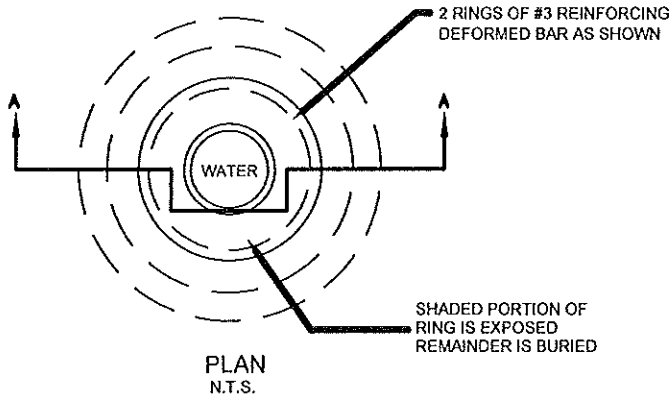
NOTES:

1. DOUBLE STRAP SADDLE REQUIRED FOR PVC PIPE.
2. ALL FITTINGS CTS COMPRESSION TYPE.
3. METERS SHALL BE PROVIDED BY ESD.
4. NO PLANTS OR LANDSCAPING SHALL BE ALLOWED 4'-0" OF METER BOX.
5. BARB-TYPE FITTING ARE NOT ACCEPTABLE.

| | |
|-----------------------------------|--|
| EASTOVER SANITARY DISTRICT | |
| DRAWING # | 3/4" OR 1" TYPICAL RESIDENTIAL SERVICE CONNECTION |
| W-13 | |

L:\work-12.01 general consulting\Drawings\Sanitary details\Water\update details\W-13.dwg; Last Saved By: FROST, 6/9/2017 11:41:20 AM; Layout1: Plotted By: Frank, 06/09/17 04:02:18 PM
 XREF: ESD051P.dwg, ESD051P.dwg, IMAC, No images

L:\vwd-1\c\general consulting\Drawings\standards details\water\updates details\W-14.dwg: Last Saved By: FRANK, 6/9/2017 3:14:11 PM: Layout: milled by: Frank, 06/09/17 04:02:37 PM
 XREF: E500511P.dwg, E500511P.dwg, IMAGE: No images



- NOTES:
1. CONCRETE PROTECTOR RING SHALL BE 2500 P.S.I. PRECAST REINFORCED CONCRETE
 2. VALVE BOX SHALL BE AT GRADE W/PROTECTOR RING EXTENDING 1/2" ABOVE GRADE
 3. SEE GATE VALVE AND BOX DETAIL
 4. VALVE BOX PROTECTOR RINGS SHALL BE INSTALLED AROUND VALVE BOX IN UNPAVED NON-TRAFFIC AREAS, AND SHALL NOT CREATE A HINDERANCE TO MOWING OPERATIONS.

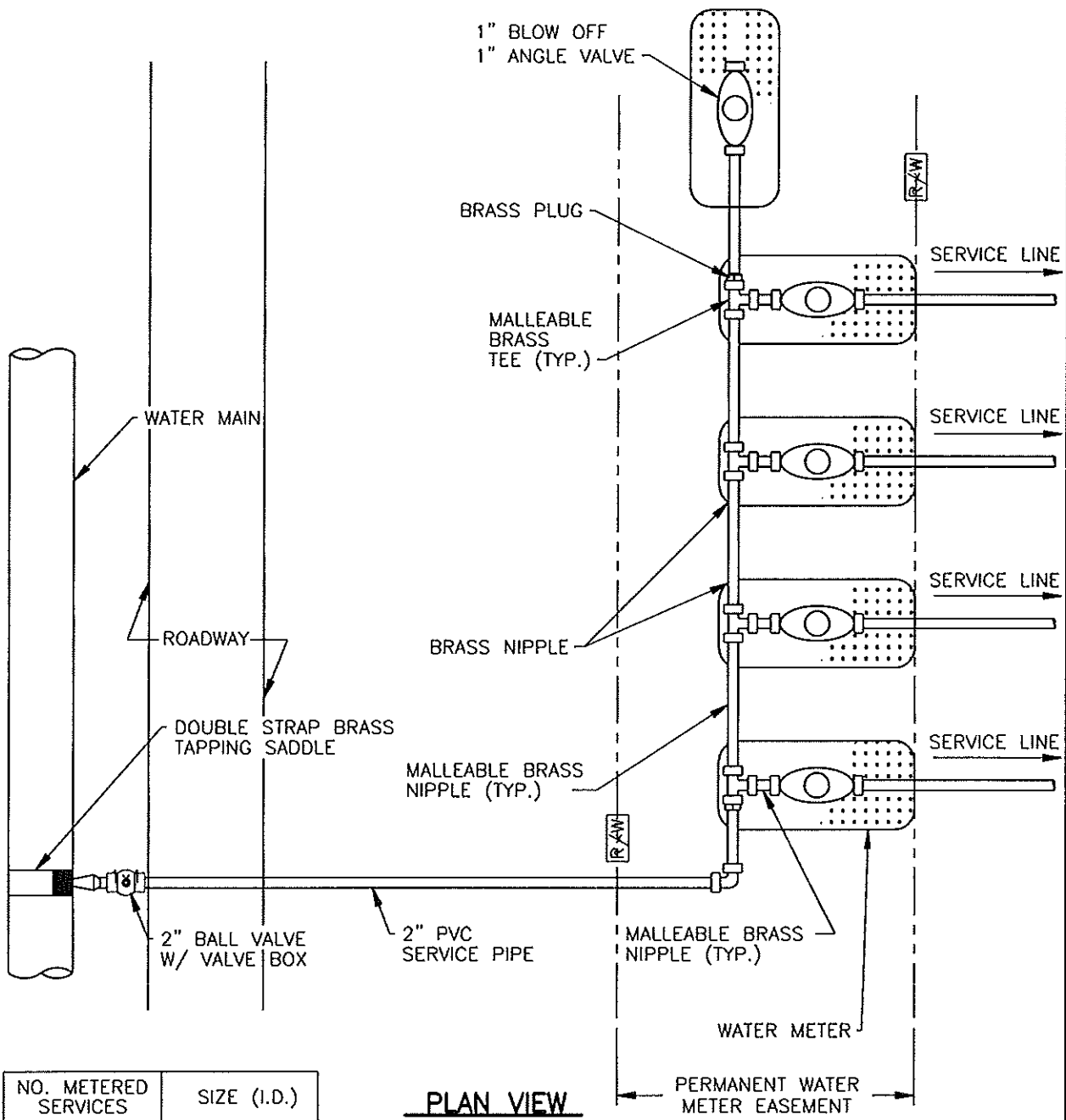
EASTOVER SANITARY DISTRICT

DRAWING #

W-14

VALVE BOX
PROTECTOR RING

L:\CSO-1401 General Consulting\Drawings\Standard Details\Water\Updated Details\W-15.dwg: Last Saved By: FRANK, 6/2/2017 3:18:35 PM, Layout1: plotted By: Frank, 06/12/17 08:14:32 AM



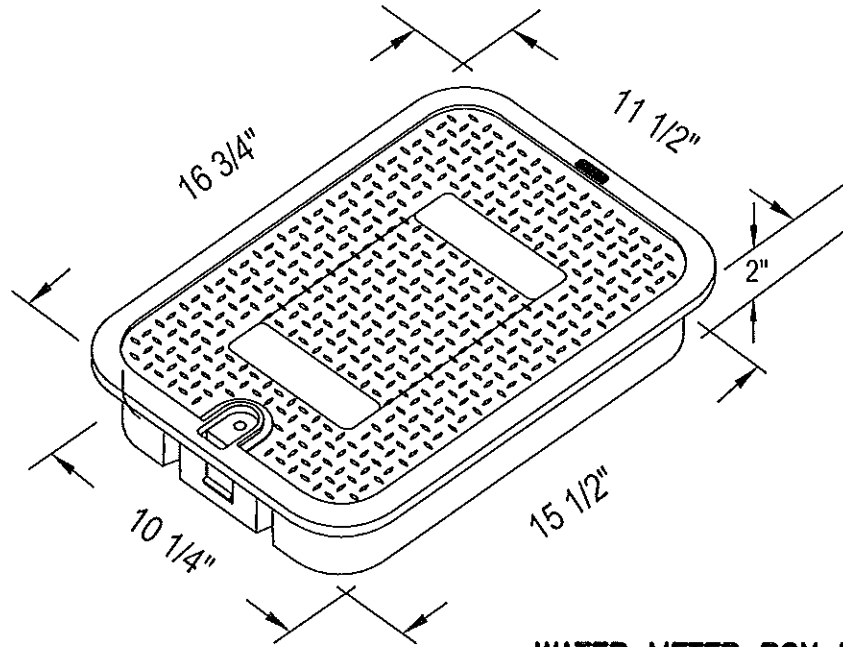
| NO. METERED SERVICES | SIZE (I.D.) |
|----------------------|-------------|
| 2-10 | 2" (SDR 21) |
| 1-2 | 1" (CTS) |

NOTES:

- 1) SEE DETAILS W-13 FOR RESIDENTIAL SERVICE REQUIREMENTS
- 2) SEE DETAIL W-16 FOR METER BOX REQUIREMENTS
- 3) 2" WILL REQUIRE GATE VALVE

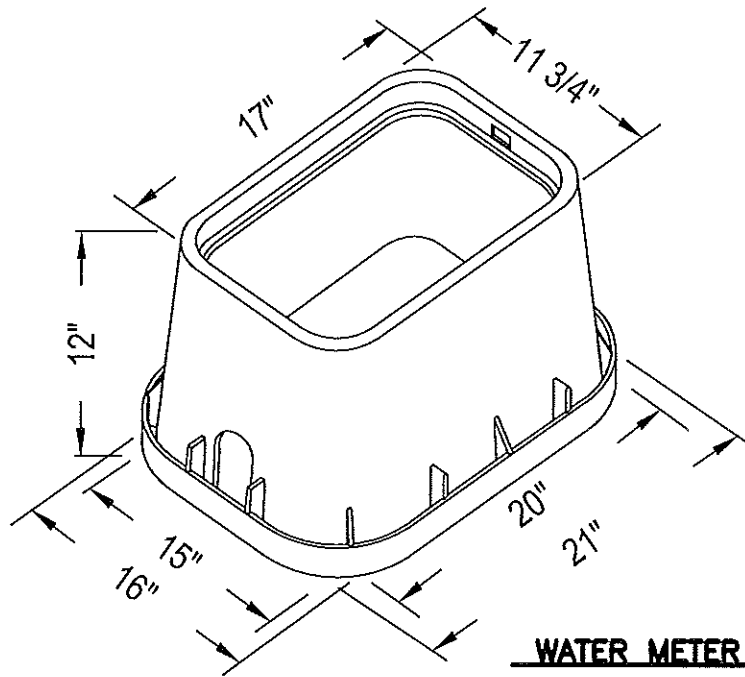
| | |
|-----------------------------------|-------------------------------------|
| EASTOVER SANITARY DISTRICT | |
| DRAWING # | |
| W-15 | STANDARD GANG METER ASSEMBLY |

\\LSSD-1201_Central_Confirming\Drawings\Standard Details\Water\Updated Details\W-16.dwg; Last Saved By: FRANK, 6/9/2017 2:59:20 PM; Layout1; Plotted By: Frank, 06/12/17 08:16:28 AM



WATER METER BOX LID DETAIL

N.T.S.



WATER METER BOX DETAIL

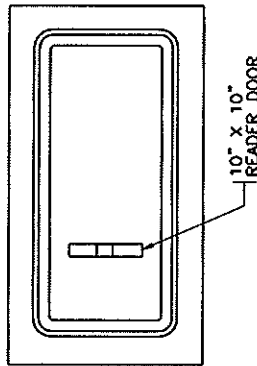
N.T.S.

EASTOVER SANITARY DISTRICT

DRAWING #

W-16

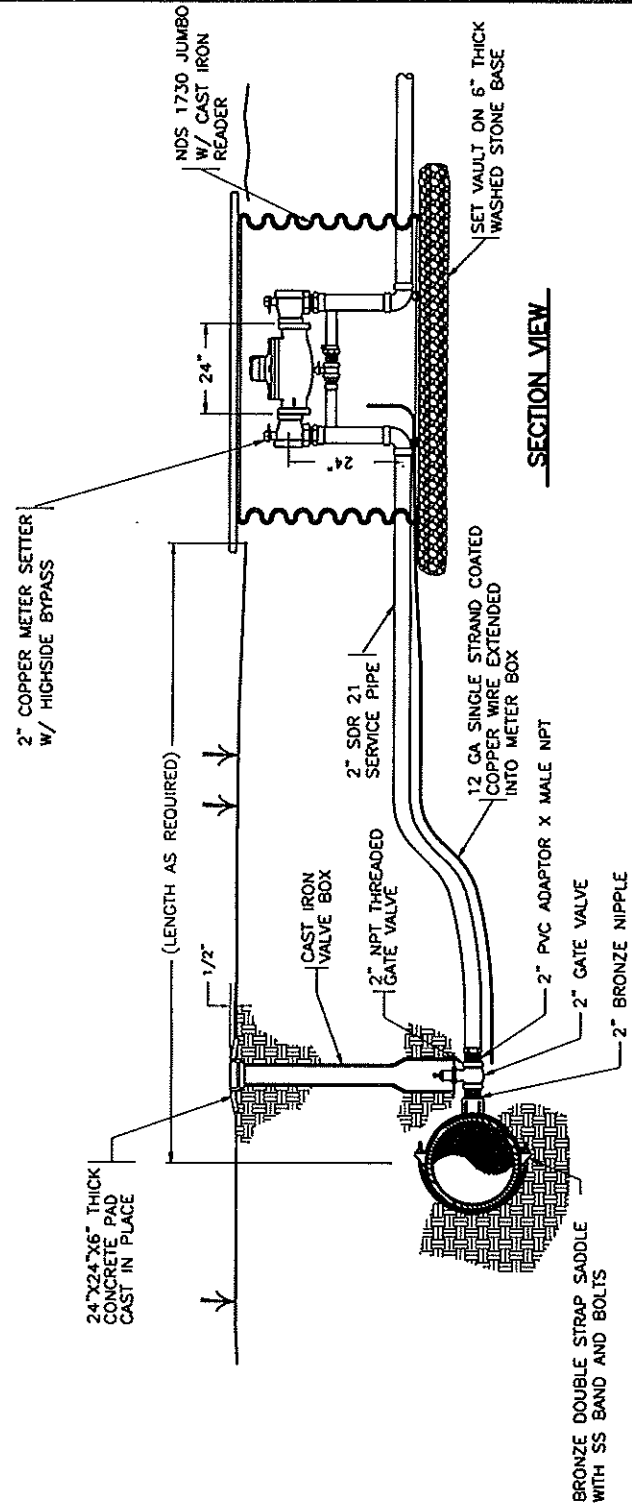
3/4" AND 1" WATER
METER BOX DETAIL



TOP VIEW

NOTES:

1. WATER METER SHALL BE SENSUS, ITRON OR APPROVED EQUAL. REGISTRATION SHALL BE IN GALLONS.
2. 2" COPPERSETER SHALL HAVE 1" HIGH-SIDE BYPASS, 2" FIP INLET & OUTLET, AND 24" METER SPACING. 2" COPPERSETER SHALL BE FORD MODEL NO. VBB-12B-11-77-235NL OR EQUAL

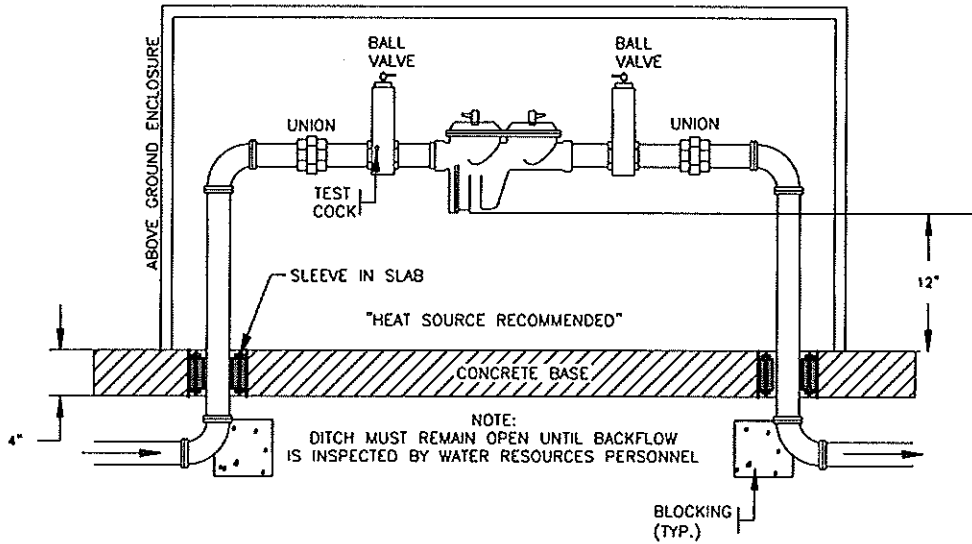


SECTION VIEW

2" WATER SERVICE DETAIL
N.T.S.

| | |
|-----------------------------------|-------------------------------------|
| EASTOVER SANITARY DISTRICT | |
| DRAWING # | 1 1/2-2" TYPICAL SERVICE CONNECTION |
| W-17 | |

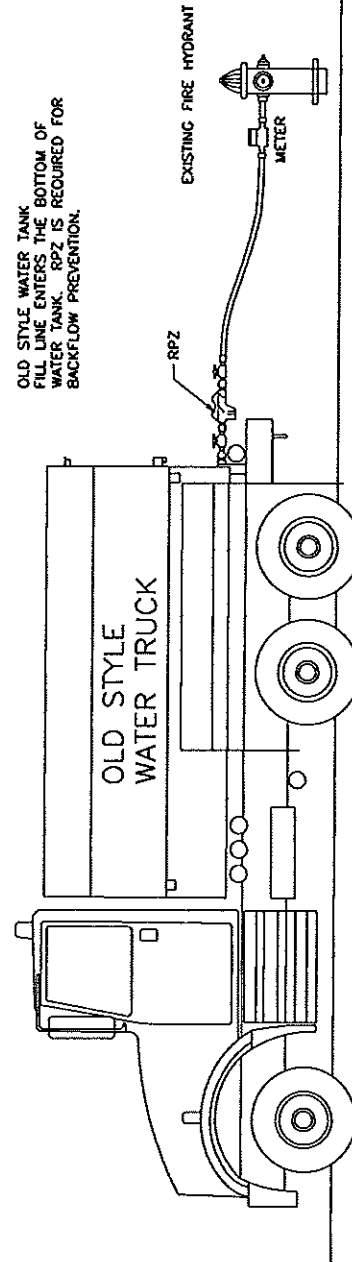
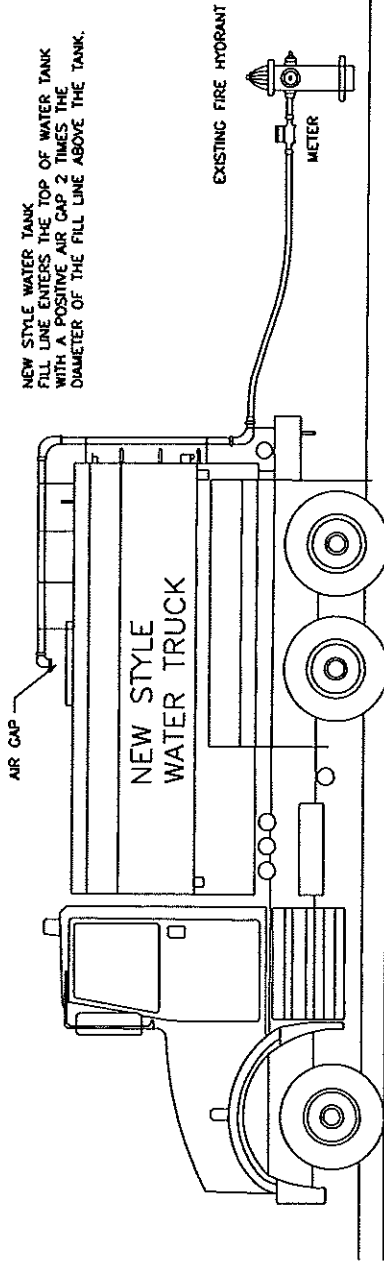
L:\env-12201 general consulting\Drawings\standard details\water\updated details\W-18.dwg Last Saved By: ANDY PATTERSON, 6/18/2014 1:41:43 PM; Layout1: Posted By: Frank, 06/09/17 03:30:25 PM
 XREF: 2508311P.dwg, \L2508311P.DWG, 2508311P.dwg No Images



1. THE BACKFLOW DEVICE SHALL BE WITHIN 5' OF AND ON THE PROPERTY SIDE OF THE METER.
 - FOR DOMESTIC IRRIGATION THE BACKFLOW DEVICE SHALL BE WITHIN 5' OF THE METER.
2. ALL REDUCED PRESSURE BACKFLOW DEVICES SHALL BE INSTALLED ABOVE GROUND IN A HORIZONTAL POSITION.
3. THE DEVICE SHALL HAVE 4 TEST COCKS WITH ONE BEING INSTALLED ON THE CITY SIDE OF THE INLET BALL VALVE.
4. APPROVED UNITS: WILKINS, WATTS, FEBCO, CONBRACO
5. APPROVED ABOVE GROUND ENCLOSURES: "HOT BOX", HYDROCOWL, SMI. BOX MUST HAVE DRAIN.
6. TANDEM BACKFLOWS REQUIRED IF SERVING MULTIPLE USERS OR SERVICE CANNOT BE INTERRUPTED.
7. MUST BE TESTED UPON INSTALLATION OR PRIOR TO PUBLIC USE.

| | |
|-----------------------------------|--|
| EASTOVER SANITARY DISTRICT | |
| DRAWING # | 3/4" - 2" REDUCED PRESSURE BACKFLOW PREVENTER |
| W-18 | |

NOTE:
 MINIMUM STANDARDS FOR
 PROPER AIR GAP ARE:
 2 TIMES THE DIAMETER OF THE FILL LINE
 EX: 4" FILL LINE = 8" POSITIVE AIR GAP
 ABOVE THE TANK

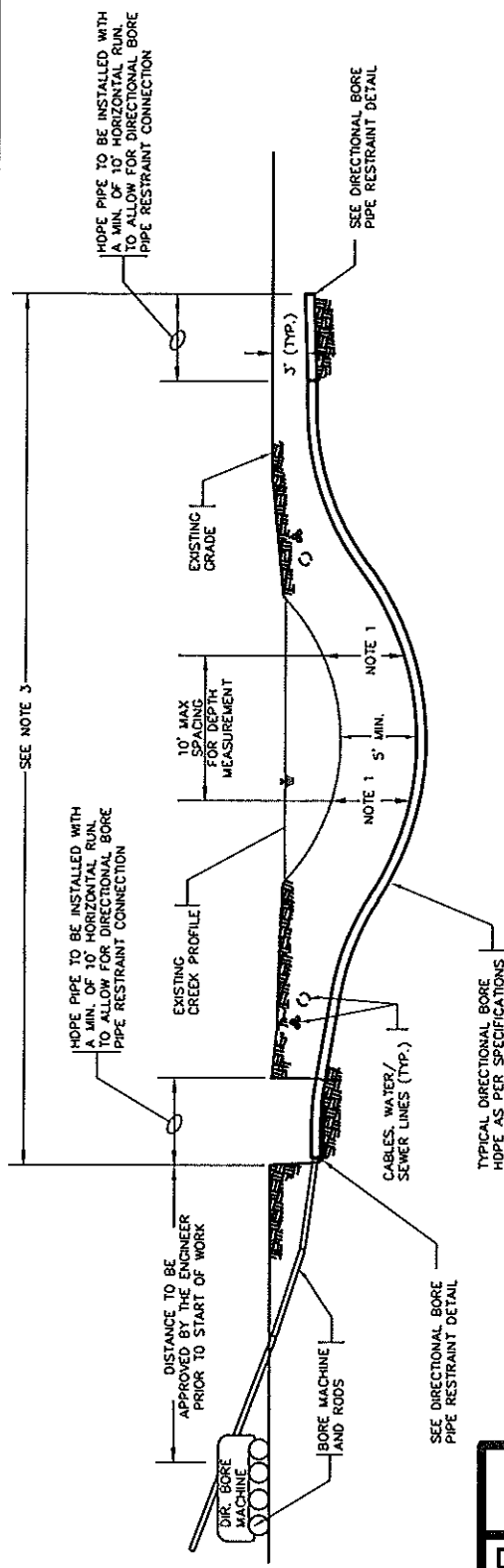


EASTOVER SANITARY DISTRICT

DRAWING #

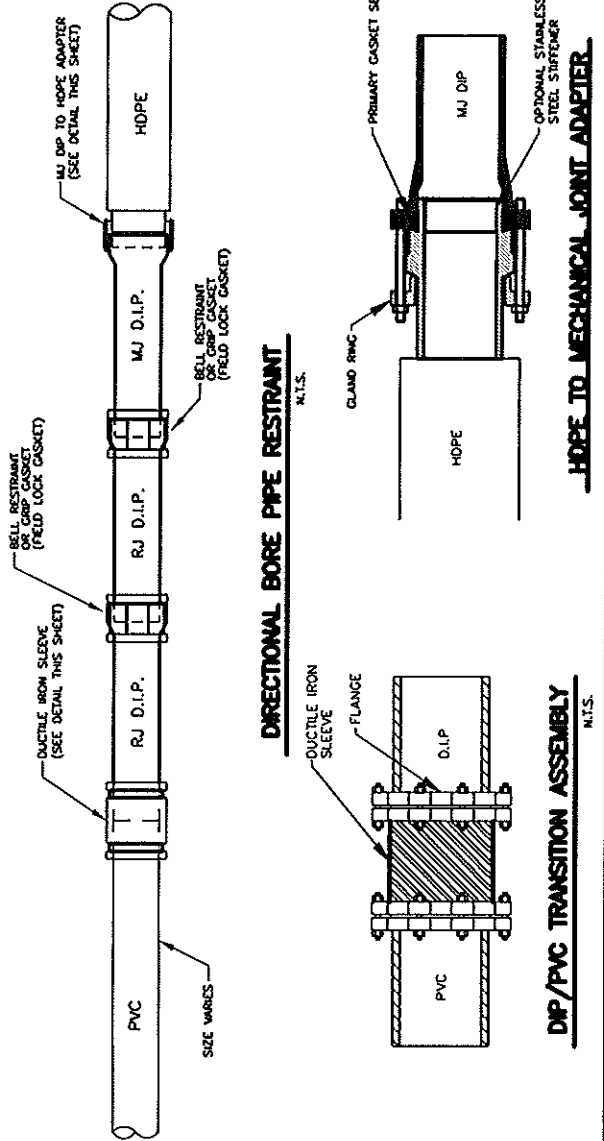
W-19

WATER FROM HYDRANTS
 TANKER DETAIL



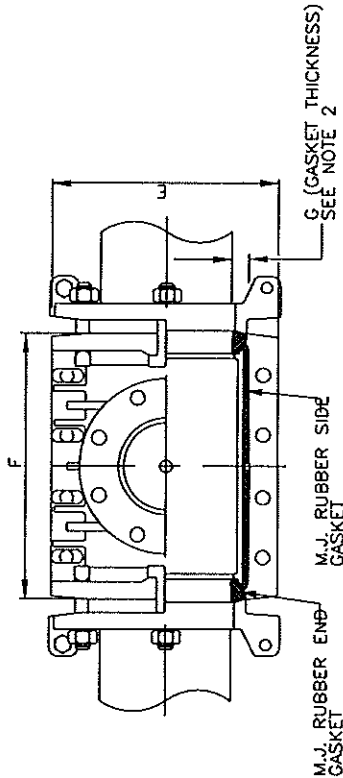
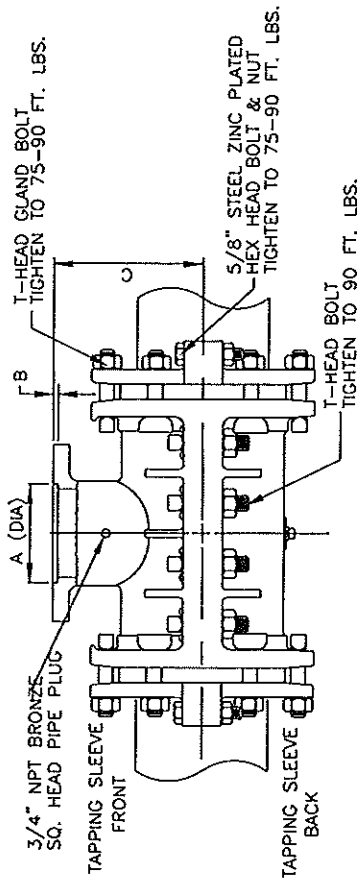
TYPICAL DIRECTIONAL BORE FOR HIGH-DENSITY POLYETHYLENE (HDPE) PIPE

N.T.S.



- NOTES:
1. A PROFILE AND PLAN SHALL BE PROVIDED FROM ENTRY TO EXIT FOR EACH DIRECTIONAL BORE SECTION BY THE DIRECTIONAL BORE CONTRACTOR.
 2. ALL BORE SECTIONS SHALL BE HYDROSTATICALLY TESTED PER SPECIFICATION STANDARDS UPON COMPLETION OF INSTALLATION AND PRIOR TO PLACING HDPE IN SERVICE.
 3. LENGTH OF CROSSING, LOCATION OF INSPECTION/OBSERVATION EXCAVATION, NUMBER OF PIPE JOINTS, LOCATION OF BORE MACHINE, AUGER ENTRANCE LOCATION, AND TE-IN POINTS ARE TO BE APPROVED BY THE ENGINEER PRIOR TO ANY START OF WORK.
 4. THIS DETAIL IS ALSO APPLICABLE TO STREAMS, WETLANDS, LARGE STORM DRAINS, AND SIMILAR APPLICATIONS FOR DIRECTIONAL BORE WITH POLYETHYLENE PIPE.
 5. THE BORE DEVELOPED FOR THE LEAD IN END OF THE PIPE SHALL BE KEPT AT A MINIMUM DIAMETER FOR THE PIPE INSTALLATION. THE LEAD IN END SHALL BE PULLED THROUGH WITHOUT THE M.J. FLANGE ATTACHED FOR LARGER THAN 6" PIPE INSTALLATIONS. THE M.J. FLANGE FOR SAID LEAD IN END SHALL BE INSTALLED AFTER THE PIPE INSTALLATION WITH THE USE OF A SPUT M.J. FLANGE PER THE DETAIL ON THIS DRAWING.

| | |
|-----------------------------------|-------------------------------------|
| EASTOVER SANITARY DISTRICT | |
| DRAWING # | |
| W-21 | DIRECTIONAL BORE DETAILS |



- NOTES:**
1. SLEEVE BODY SHALL BE DUCTILE IRON ASTM A536.
 2. MECHANICAL JOINT TAPPING SLEEVES SHALL BE AS MANUFACTURED BY CLOW, M & H, MUELLER, OR AMERICAN AND SHALL BE FURNISHED WITH SPLIT GLANDS, SPLIT END GASKET, BOLTS, ETC. THE OUTLET FLANGE SHALL BE CL 125 PER ANSI B16.1 COMPATIBLE WITH APPROVED TAPPING VALVES.
 3. DIMENSIONS SHOWN ARE FOR REFERENCE AND MAY VARY BASED UPON MANUFACTURER. SLEEVES SHALL BE SIMILAR IN NATURE TO THAT SHOWN AND SHALL NOT DEVIATE IN ESSENTIAL DETAILS.
 4. PIPE SURFACES SHALL BE CLEANED THOROUGHLY TO PERMIT FOR A GOOD SEAL PRIOR TO INSTALLATION.
 5. EXTERIOR OF TAPPING SLEEVE SHALL BE COATED w/2 COATS ASPHALTIC VARNISH MIL-C450.
 6. ALL TAPPING SLEEVES SHALL BE HYDROSTATICALLY PRESSURE TESTED. TEST SHALL BE WITNESSED AND APPROVED BY ESD PROJECT COORDINATOR PRIOR TO BEGINNING TAPPING PROCESS.

SLEEVE FOR USE WITH CI OR DI PIPE

| SLEEVE SIZE PIPE X BRANCH | 6X6 | 8X6 | 8X8 | 12X6 | 12X8 | 12X12 | 16X6 | 16X8 | 16X12 | 24X6 | 24X8 | 24X12 | 24X16 | 24X24 | 30X6 | 30X8 | 30X12 | 30X16 | 30X24 |
|------------------------------|--------|--------|--------|--------|--------|--------|--------|--------|--------|--------|--------|--------|--------|--------|--------|--------|--------|--------|--------|
| A DIA | 7.016 | 7.016 | 9.016 | 7.016 | 9.016 | 13.016 | 7.016 | 9.016 | 13.016 | 11.00 | 13.5 | 19.0 | 23.5 | 32.0 | 11.00 | 13.5 | 19.0 | 23.5 | 32.0 |
| B | .31 | .31 | .31 | .31 | .31 | .31 | .31 | .31 | .31 | .31 | .31 | .31 | .31 | .31 | .31 | .31 | .31 | .31 | .31 |
| C | 7-7/8 | 9-1/16 | 9 | 11-5/8 | 11-7/8 | 12-1/8 | 12-1/8 | 12-1/8 | 12-1/8 | 12-1/8 | 12-1/8 | 12-1/8 | 12-1/8 | 12-1/8 | 12-1/8 | 12-1/8 | 12-1/8 | 12-1/8 | 12-1/8 |
| E | 11-3/4 | 13-7/8 | 14-1/8 | 15-1/2 | 16-1/2 | 17-1/2 | 18-1/2 | 19-1/2 | 20-1/2 | 20-1/2 | 20-1/2 | 20-1/2 | 20-1/2 | 20-1/2 | 20-1/2 | 20-1/2 | 20-1/2 | 20-1/2 | 20-1/2 |
| F | 13-1/2 | 15 | 15 | 19-1/2 | 19-1/2 | 22-1/2 | 22-1/2 | 22-1/2 | 22-1/2 | 22-1/2 | 22-1/2 | 22-1/2 | 22-1/2 | 22-1/2 | 24 | 24 | 24 | 24 | 24 |

| | |
|--|-------------|
| EASTOVER SANITARY DISTRICT | |
| DRAWING # | W-22 |
| MECHANICAL JOINT TAPPING SLEEVE AND VALVE | |